

# Hodgkin Lymphoma

*Dr Larry Bacon  
Haematology SpR*

*On Some Morbid Appearances of the  
Absorbent Glands and the Spleen*

*Hodgkin 1832*

# Overview

- Patient questions
  - *Who*
  - *How*
  - *Why*
  - *When*
  - *What*
  - *Where*
- **New patient**
- **Treatments**

WHO ?



500 new cases  
Lymphoma / year

80% NHL

HOW ?

# Epstein Barr Virus



Latent Infection of a B lymphocyte by EBV is an early transforming event

WHY ?



WHEN ?

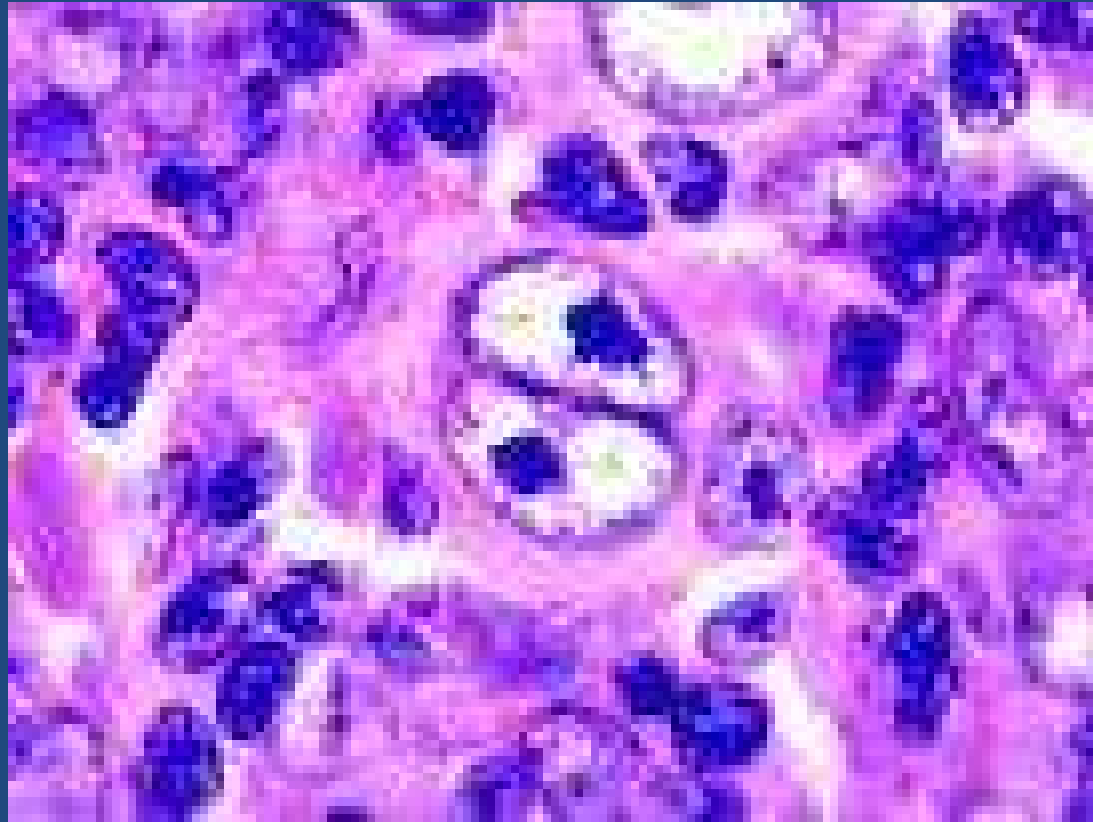


*90% 16-65 yr old*

*Median Age 35yr*



WHAT ?



## **Reed Sternberg Cell**

*Appropriate Cellular background*

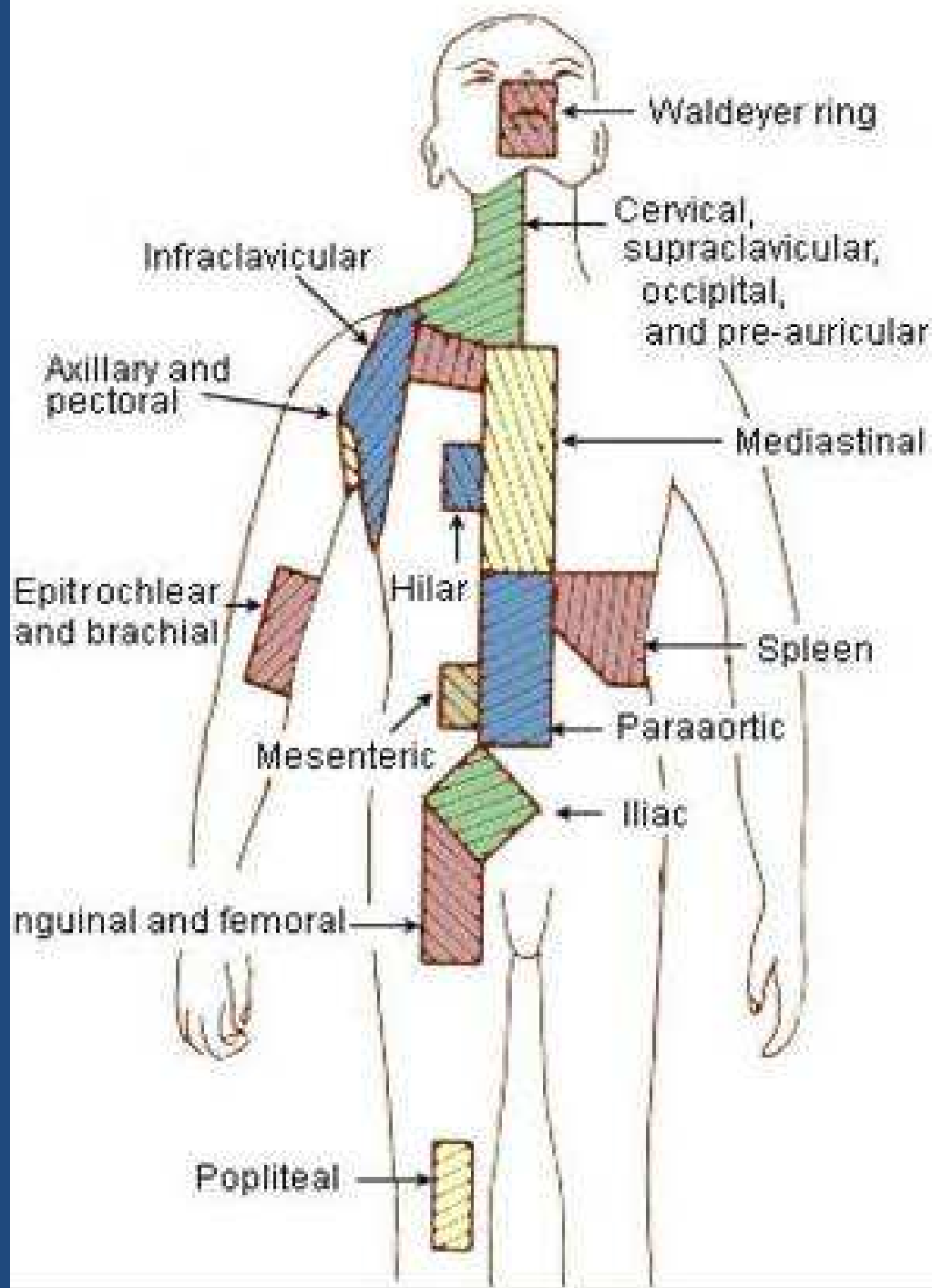
## Reed Sternberg cells

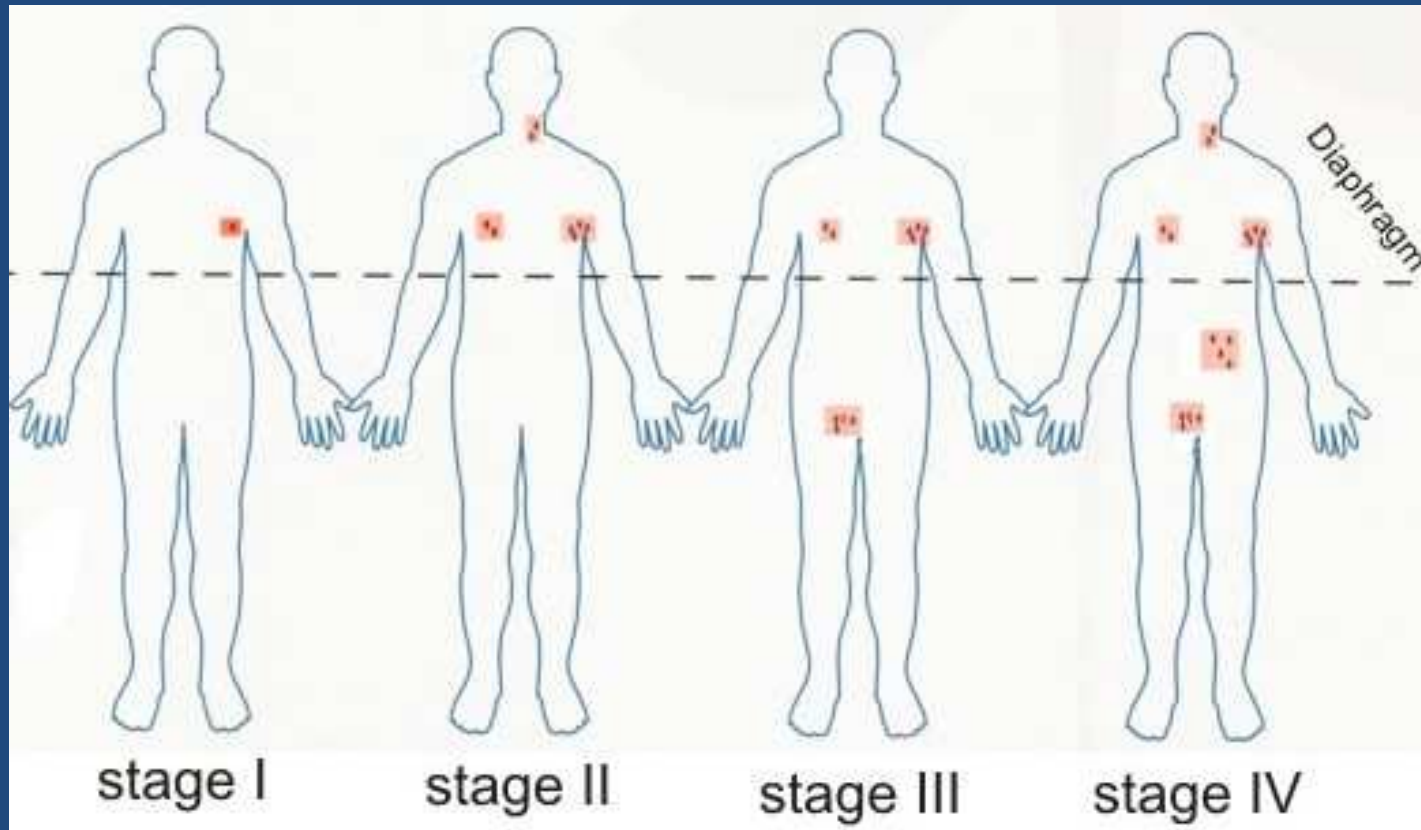
Monoclonal B lymphocytes that arise from the germinal centres of lymphoid tissues

Clone specific rearrangements of the IgG genes

Apoptosis inhibited

WHERE ?





Limited

Advanced

B symptoms

Bulk

# Overview

- Patient questions
  - *Who*
  - *How*
  - *Why*
  - *When*
  - *What*
  - *Where*
- **New patient**
- **Treatments**

New Patient

# History



B Symptoms

# Physical Examination



# Bloods



**FBC**  
**R/L/B**  
**ESR**  
**B2 microglobulin**  
**Virology**

# Radiology



**X-Ray**

**CT**

**PET-CT**

# Bone Marrow



# Overview

- Patient questions
  - *Who*
  - *How*
  - *Why*
  - *When*
  - *What*
  - *Where*
- **New patient**
- **Treatments**

Treatment

# Chemotherapy



**ABVD**

**BEACOPP**

**Escalated  
BEACOPP**

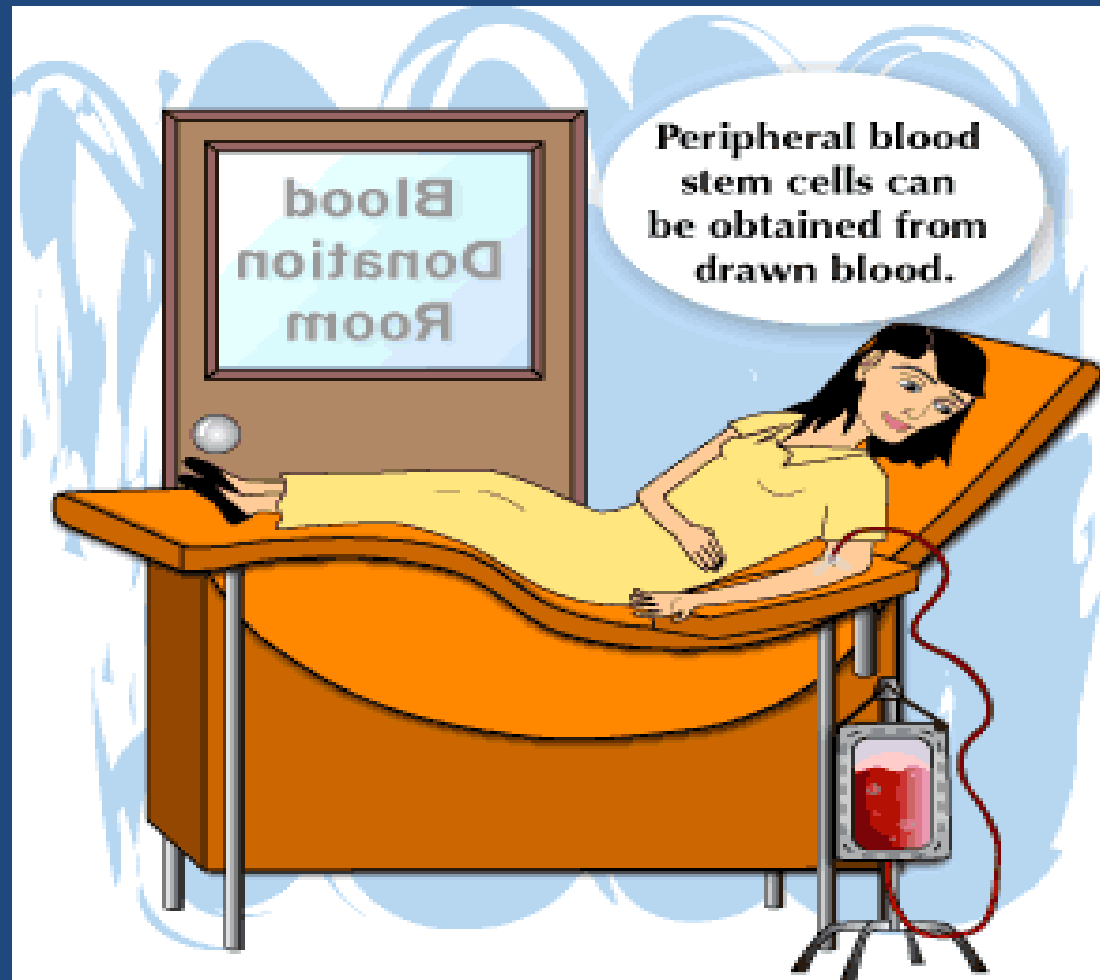
**Stanford V**

# Radiotherapy



**CURE 80-90% cases**

# Autologous Stem Cell transplant



**Alternative / Supportive therapies**

- Cancer Patient

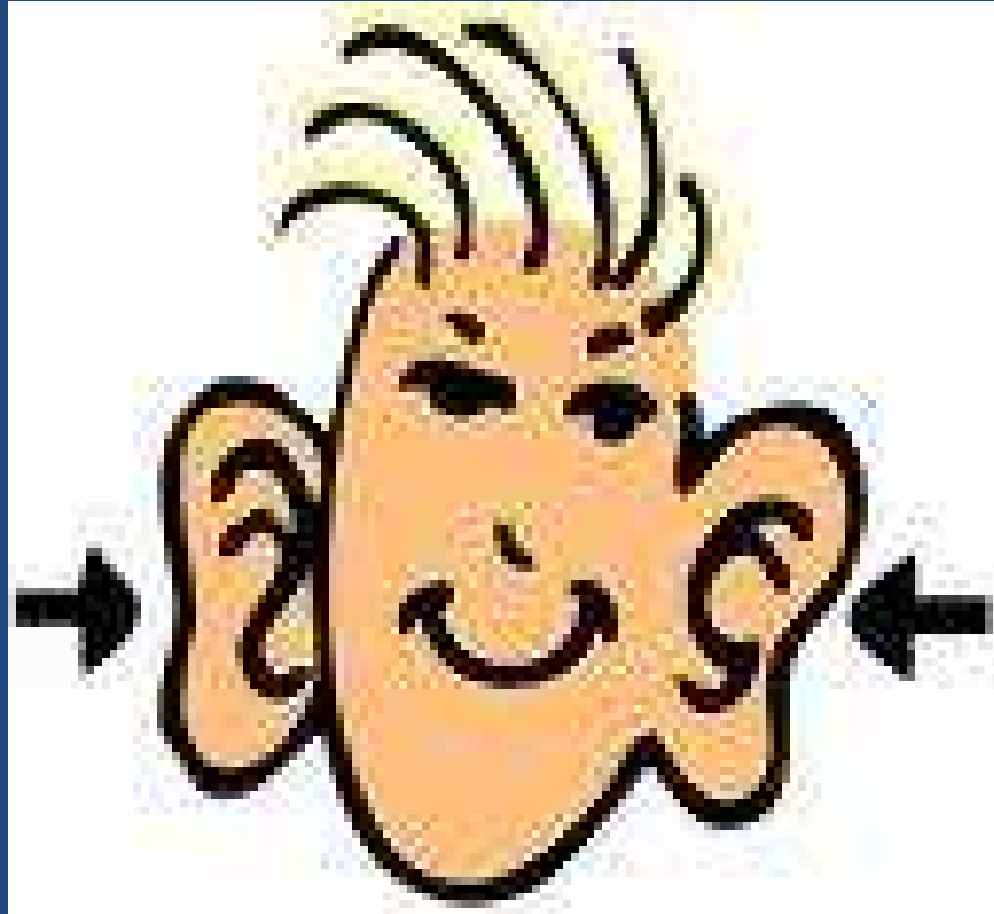
- Cancer Survivor

# LATE EFFECTS

- Secondary Cancers
- Cardiac Toxicity
- Endocrine Dysfunction
- Myelodysplasia
- Leukaemia

# SUMMARY

- Patient questions
  - *Who*
  - *How*
  - *Why*
  - *When*
  - *What*
  - *Where*
- **New patient**
- **Treatments**



Thank you